



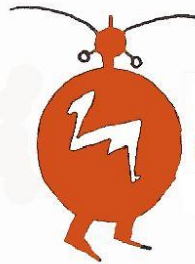
D A R G

DOMINGUEZ ANTHROPOLOGICAL RESEARCH GROUP

*A consortium for archaeological and anthropological
research, preservation and education in
the Upper Colorado River Basin.*



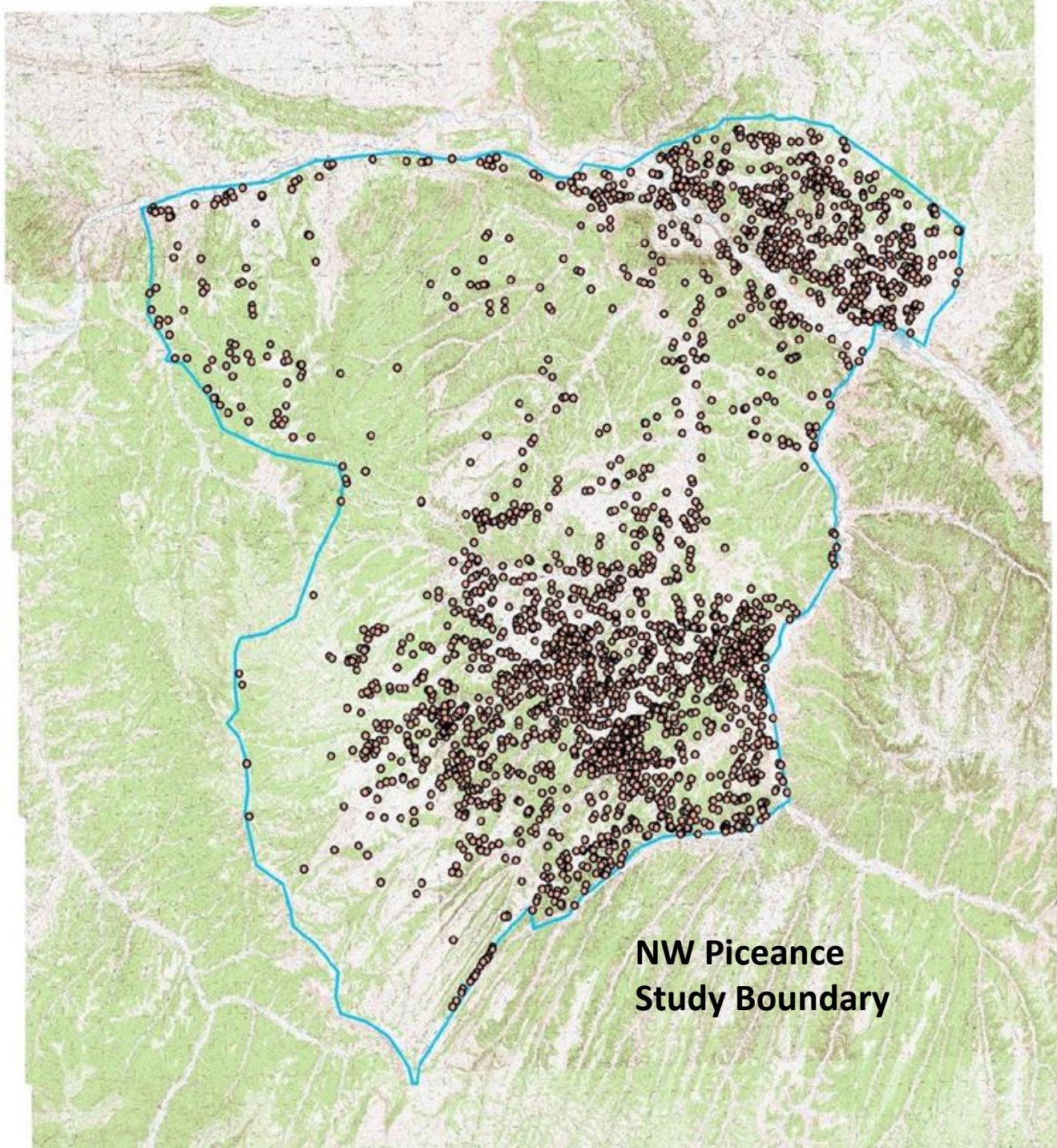
LIVING HERITAGE
— ANTHROPOLOGY —



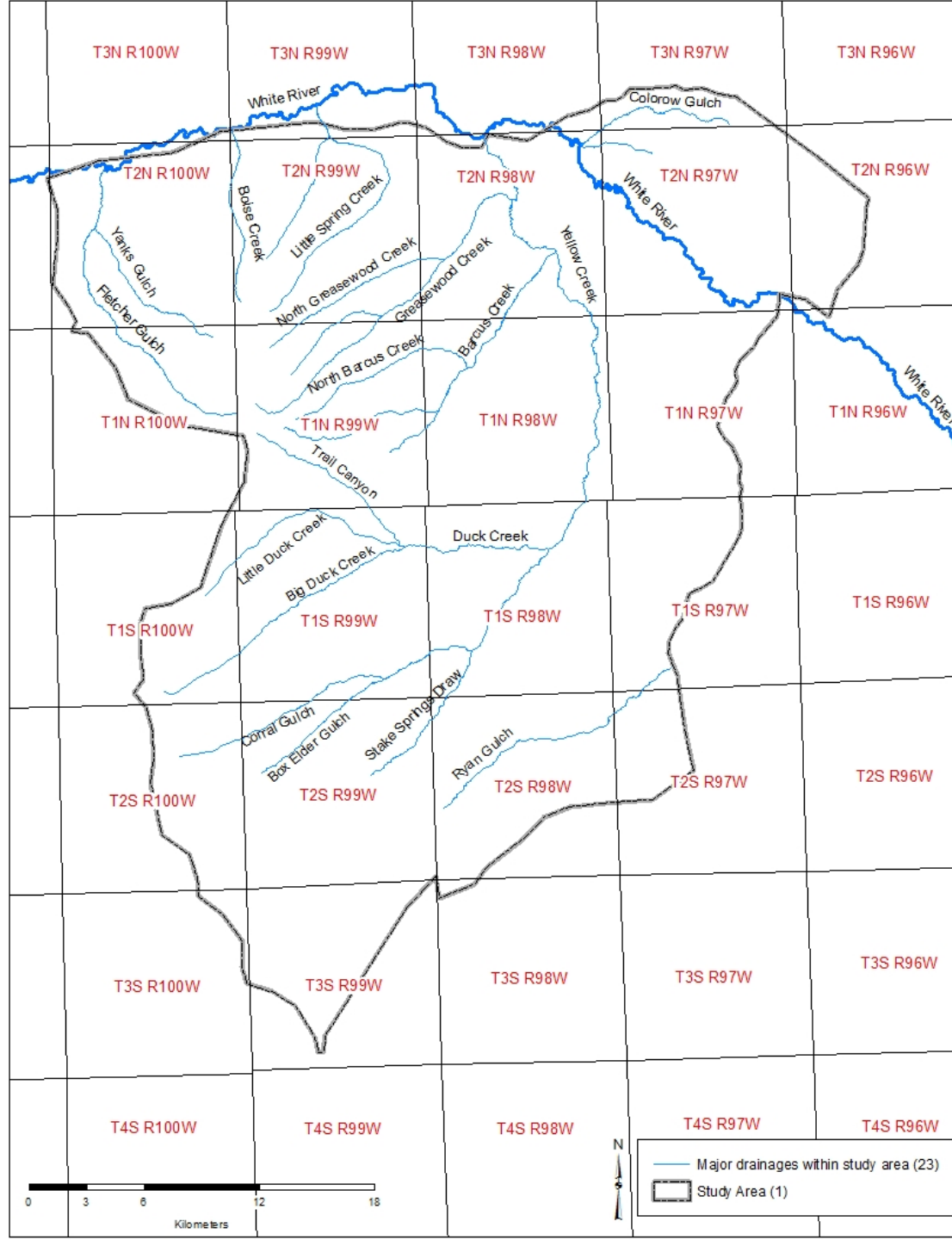
❖ **GRAND RIVER INSTITUTE** ❖

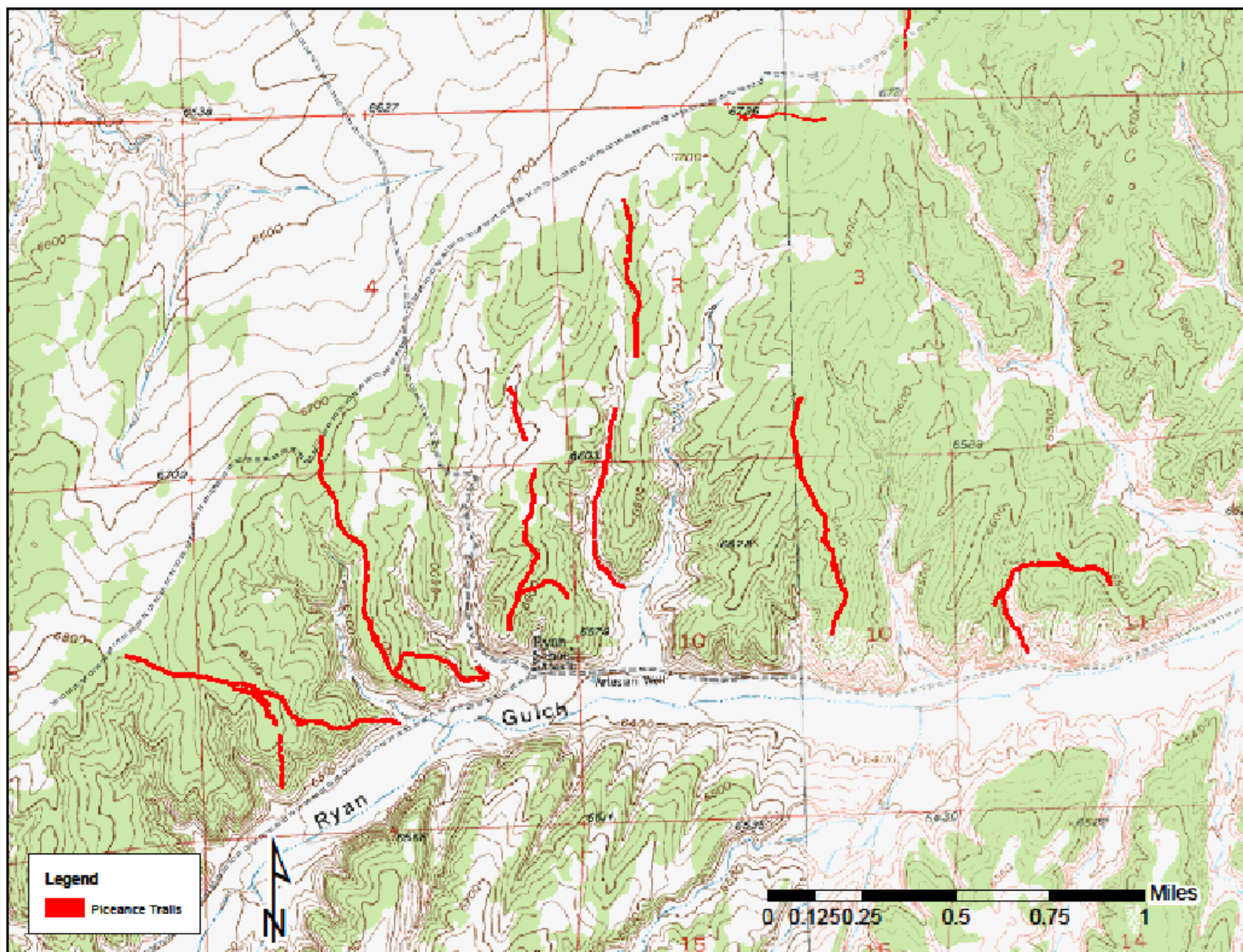
Cultural Resources Management Consulting

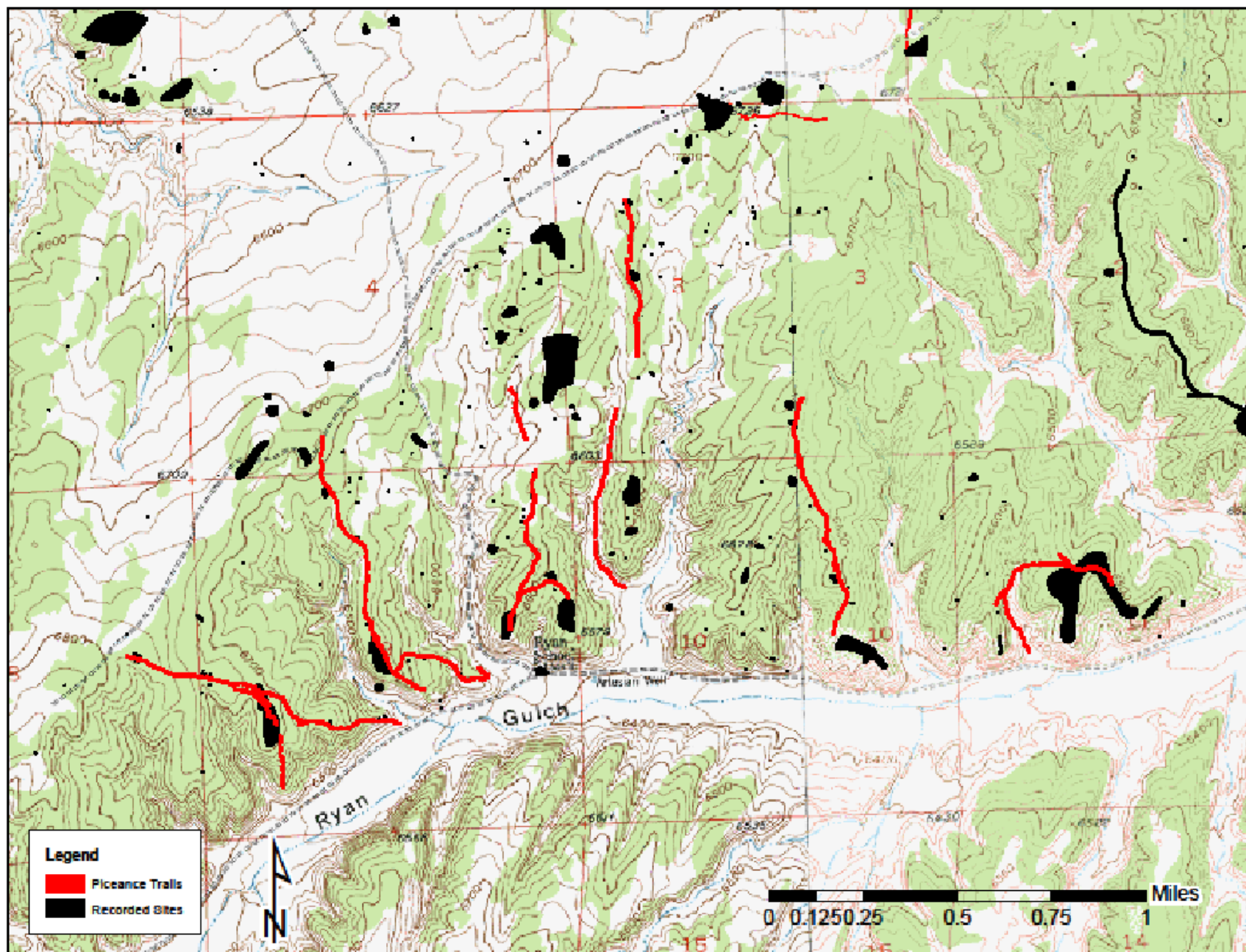
NW Piceance Ethno Study



**NW Piceance
Study Boundary**







Summary

- **2726** Sites & Isolated Finds within the boundary
 - 2004 Archaeological
 - 300 Historical Archaeology
 - 329 Paleontological
 - 87 Archaeological | Historical
 - 4 Archaeological | Paleontological
 - 1 Archaeological | Historical | Paleontological
 - 1 Unknown Site Type

Summary

- **2004** Archaeological
 - 1223 Isolated (1210 Isolated Find & 13 Isolated Feature)
 - 414 Open Camp
 - 251 Open Lithic
 - 97 Open Architectural
 - 2 Rock Art
 - 11 Sheltered Camp
 - 1 Sheltered Lithic
 - 1 Open Camp | Rock Art
 - 1 Open Camp | Burial
 - 3 Unknown Site Type

Summary

- **300** Historical Archaeology
 - 101 Euro-American
 - 1 Euro-American | Ute
 - 1 Euro-American | Ute | Hispanic
 - 1 Late Prehistoric | Fremont | Unknown Historic
 - 186 Unknown Historic
 - 10 Missing Information

Summary

- **329** Paleontological
 - 329 No Cultural Association
- **87** Archaeological | Historical
 - 10 Wooden Structure
 - 12 Projectile Point
 - 5 Historic Ware
 - 2 Rock Art
 - 7 Wooden Structure | Projectile Point
 - 2 Wooden Structure | Ceramic
 - 4 Projectile Point | Historic Ware
 - 1 Projectile Point | Ceramic | Historic Ware
 - 1 Projectile Point | Ceramic | Rock Art
 - 4 Wooden Structure | Projectile Point | Ceramic
 - 1 Wooden Structure | Projectile Point | Historic Ware
 - 1 Wooden Structure | Projectile Point | Rock Art
 - 3 Wooden Structure | Projectile Point | Ceramic | Historic Ware
 - 1 Wooden Structure | Projectile Point | Historic Ware | Rock Art

Summary

- **4** Archaeological | Paleontological
 - 1 Archaic
 - 3 Unknown Prehistoric
- **1** Archaeological | Historical | Paleontological
 - 1 Archaic | Fremont | Prehistoric Ute | Ute | Unknown Historic
- **1** Unknown Site Type

Problems with Current Data

– Inconsistency

- Open Camp vs. Open Lithic
- Definition of Isolated Find
- Recorder and location of collected artifacts

– Missing Information

- Missing Sites (15 Sites added from M. Selle)
- Many details within site are missing from SHPO (e.g. location data, artifact lists and counts, temporal cultural association)
- Some of the site forms from Compass search are inaccessible

– No clear interpretation of sites

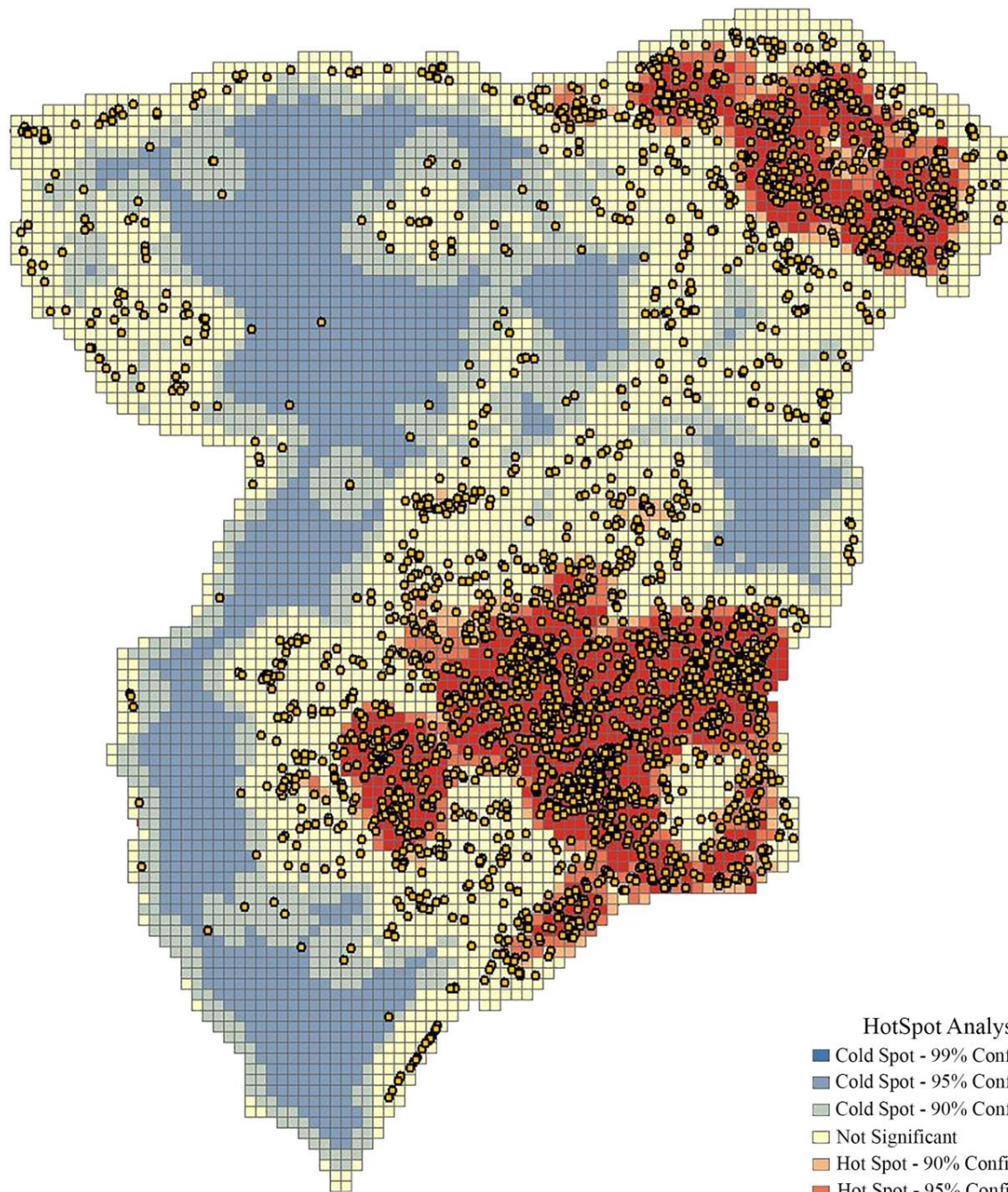
- No photographs of diagnostic artifacts
- No source information for obsidian artifacts
- “What does this mean?”

Our Goals

- Compare and update inconsistencies
 - M. Selle's data (up to 2005) vs. SHPO's data (up to 5RB8439)
- Add missing information
 - Compass search and site forms
 - Obsidian source information
 - Locations of collected artifacts
 - Temporal cultural association of diagnostic artifacts
- Interpreting data
 - Nearest Neighbor analysis (K-nearest neighbors)
 - Hot Spot analysis (Getis-Ord G_i^* statistic)
 - Flowcharts showing the general composition of sites
- Create online accessible database
 - Restricted access
 - Locational mapping with markers and pop-ups
 - High quality photograph of artifacts associated with site

Our Goals

- Compare and update inconsistencies
 - ✓ • M. Selle's data (up to 2005) vs. SHPO's data (up to 5RB8439)
- Add missing information
 - ✓ • Compass search and site forms
 - ✓ • Obsidian source information
 - ✓ • Locations of collected artifacts
 - ✓ • Temporal cultural association of diagnostic artifacts
- Interpreting data
 - ✓ • Nearest Neighbor analysis (K-nearest neighbors)
 - ✓ • Hot Spot analysis (Getis-Ord G_i^* statistic)
 - ✓ • Flowcharts showing the general composition of sites
- Create online accessible database
 - ✓ • Restricted access
 - ✓ • Locational mapping with markers and pop-ups
 - ✓ • High quality photograph of artifacts associated with site



HotSpot Analysis

- Cold Spot - 99% Confidence
- Cold Spot - 95% Confidence
- Cold Spot - 90% Confidence
- Not Significant
- Hot Spot - 90% Confidence
- Hot Spot - 95% Confidence
- Hot Spot - 99% Confidence

Nearest Neighbor Analysis

i	Average Nearest Neighbor Summary
i	Observed Mean Distance: 225.414510
i	Expected Mean Distance: 415.733845
i	Nearest Neighbor Ratio: 0.542209
i	z-score: -45.473497
i	p-value: 0.000000
i	
i	Distance measured in Meters

Clustering Distribution where the Index is less than 1 (0.54):

Observed Average Distance Between Sites (225.4m)

<

Average Distance for a Hypothetical Random Distribution (415.7m)



D A R G

DOMINGUEZ ANTHROPOLOGICAL RESEARCH GROUP

*A consortium for archaeological and anthropological
research, preservation and education in
the Upper Colorado River Basin.*

Piceance Landscape Database Project

Piceance Online Application

DARG initiated the Piceance Landscape Database Project in 2016 in cooperation with the Bureau of Land Management to provide a regional overview of historic and prehistoric Native American land use.

For more information contact:

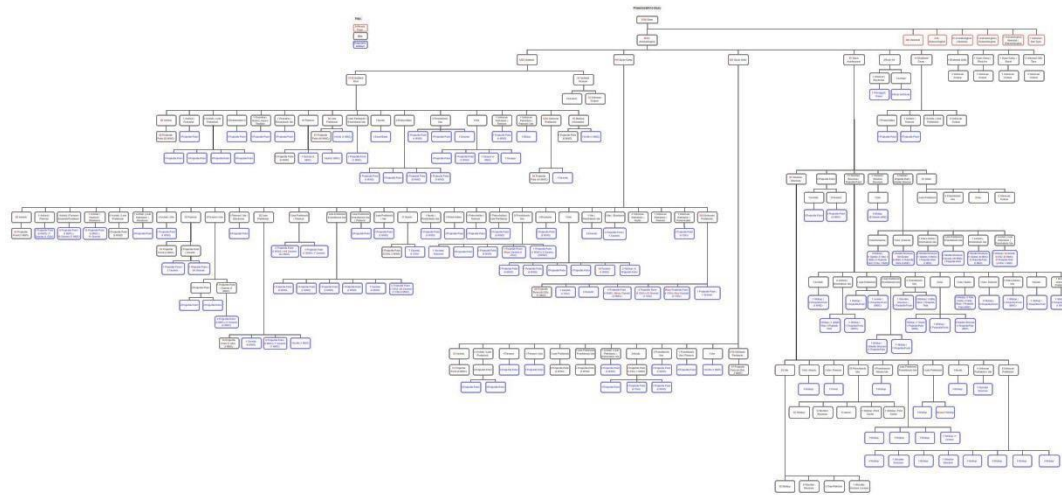
Carl Conner, Project Director
cconner@dargnet.org

[Go To Piceance Database](#) ➤

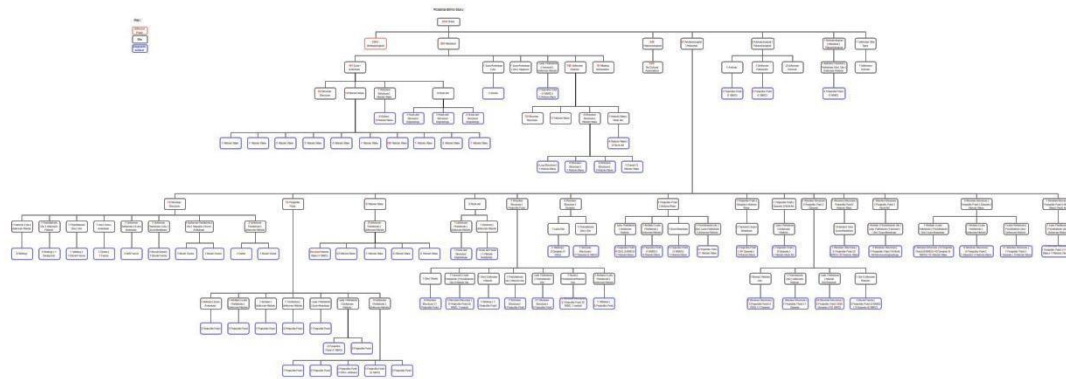
[View Archaeological Flowchart](#) ➤

[View Historical Flowchart](#) ➤

Flowcharts



Archaeological Component



Other Components

- [Search](#)
 - [Site Number](#)
- [Query](#)
 - [Attributes](#)
 - [Map Query](#)

Site Data

Site Number Eligibility

Site Type Affiliation

Zone East North Elevation

Organizations

University of Colorado Museum, Laboratory of
Public Archaeology-CSU (LOPA)

[<Prior](#) [Next>](#)

Artifact Description

2 PROJECTILE POINT - MISCELLANEOUS,
TIPS>FLAKE

Projectile Image

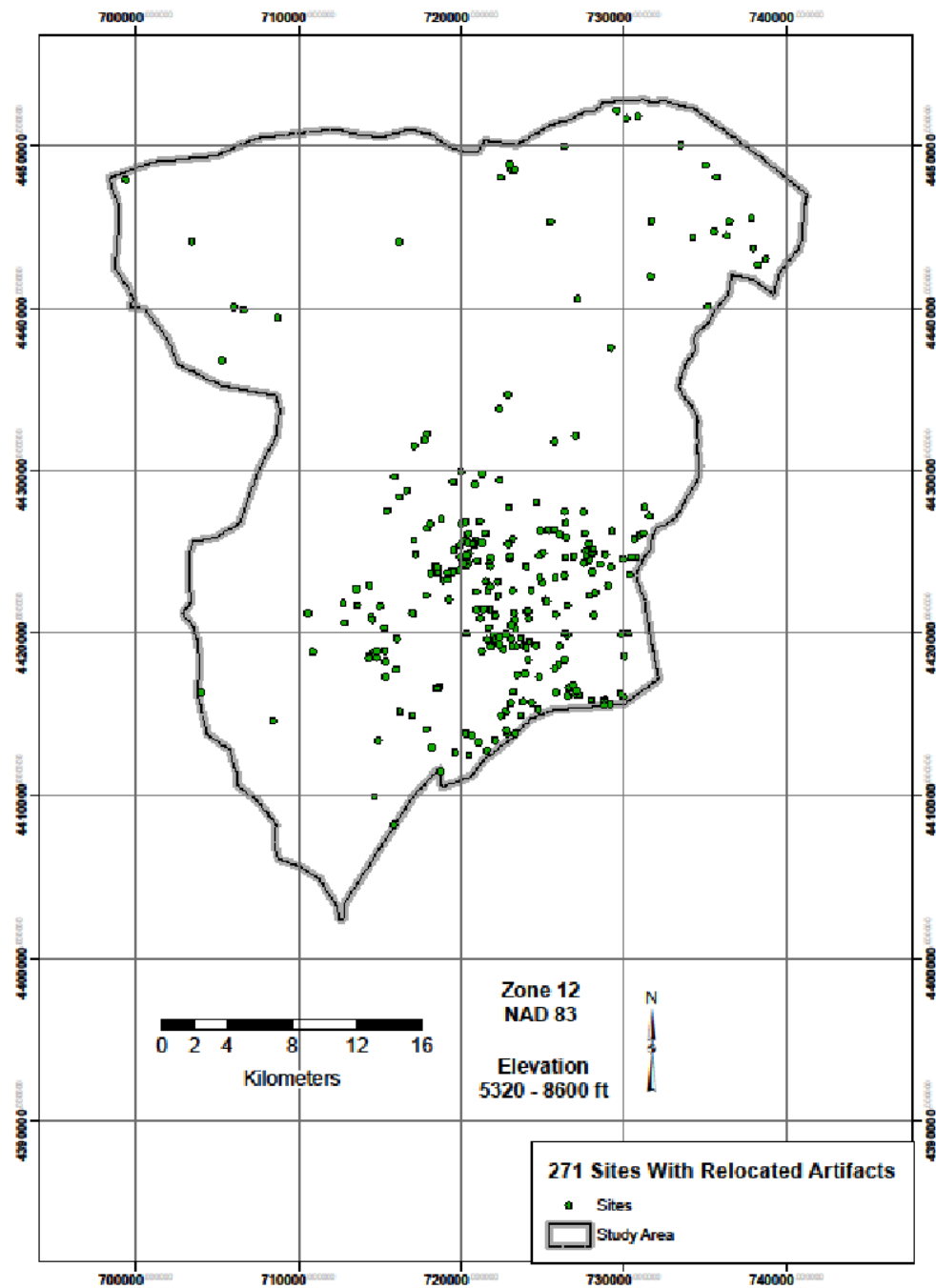


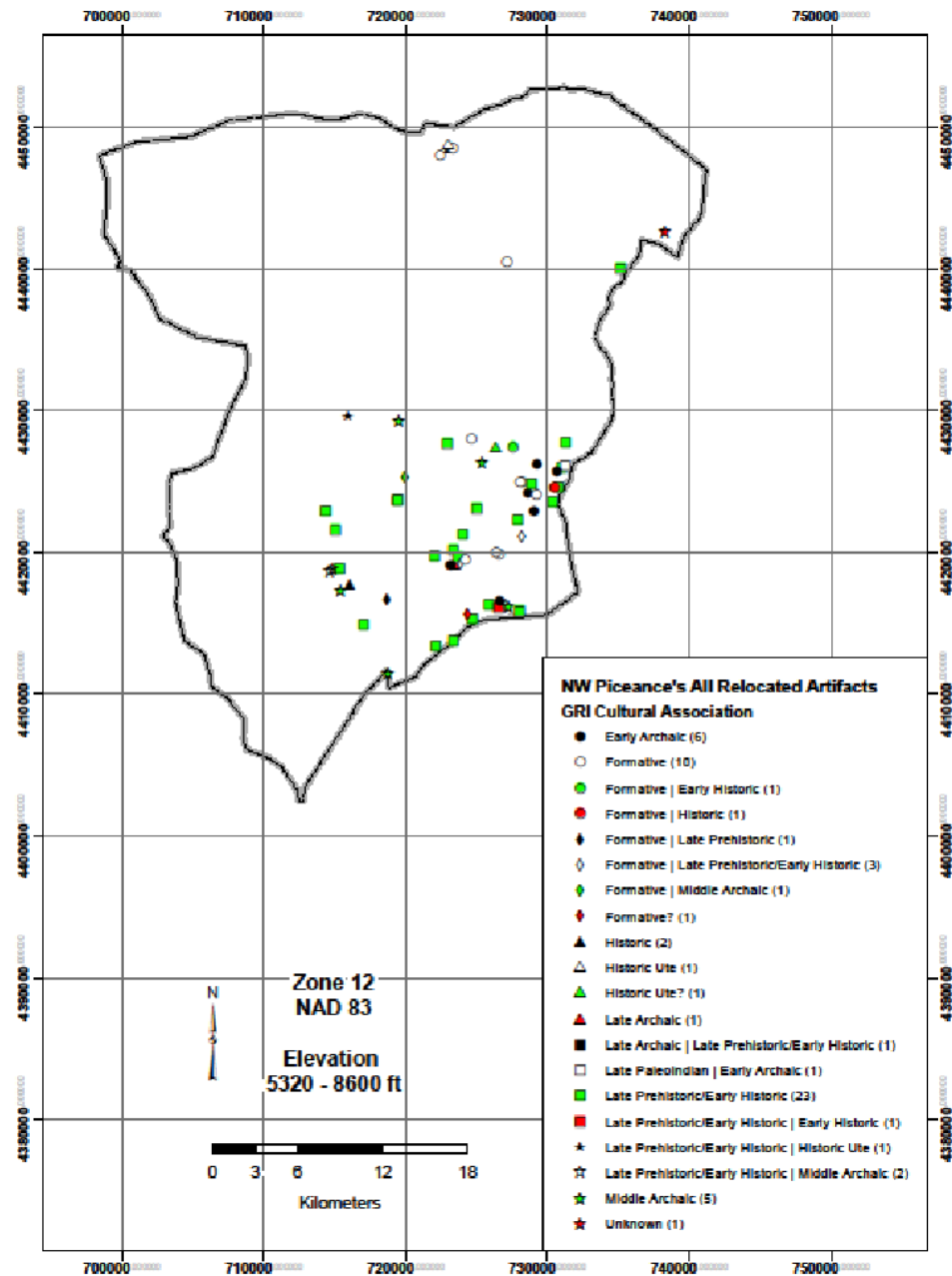
Feature Description

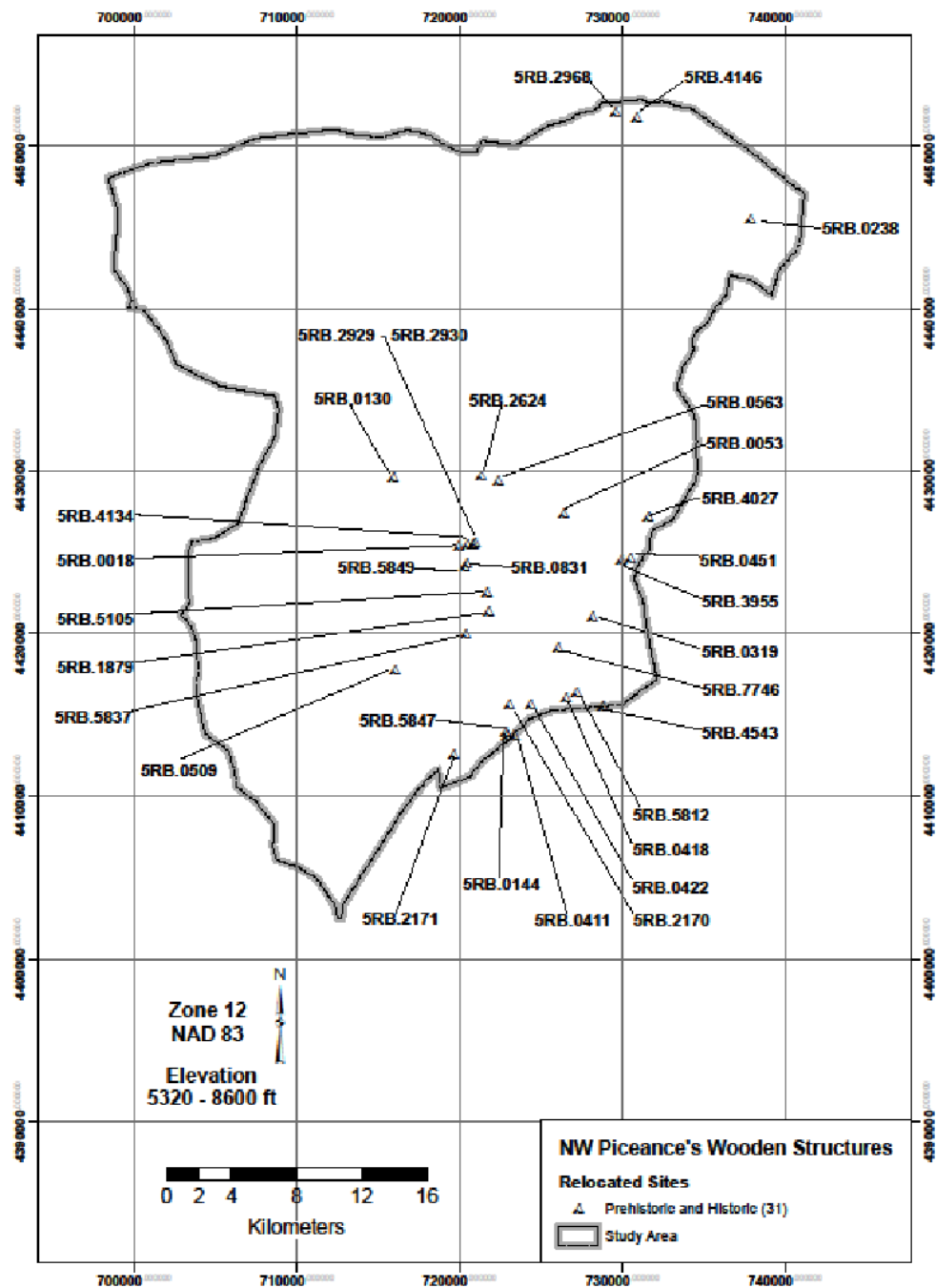
NONE

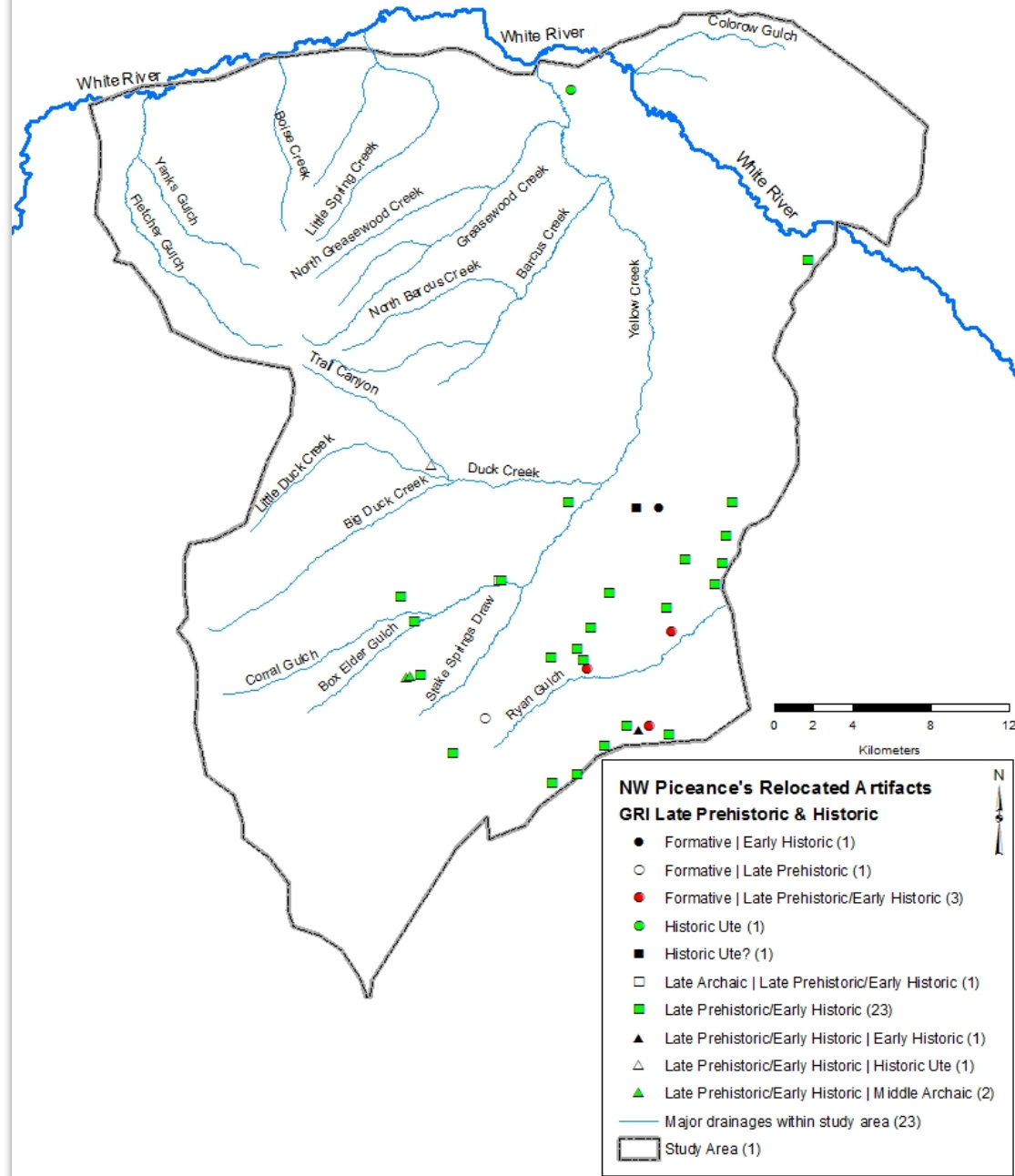
Rock Art Description

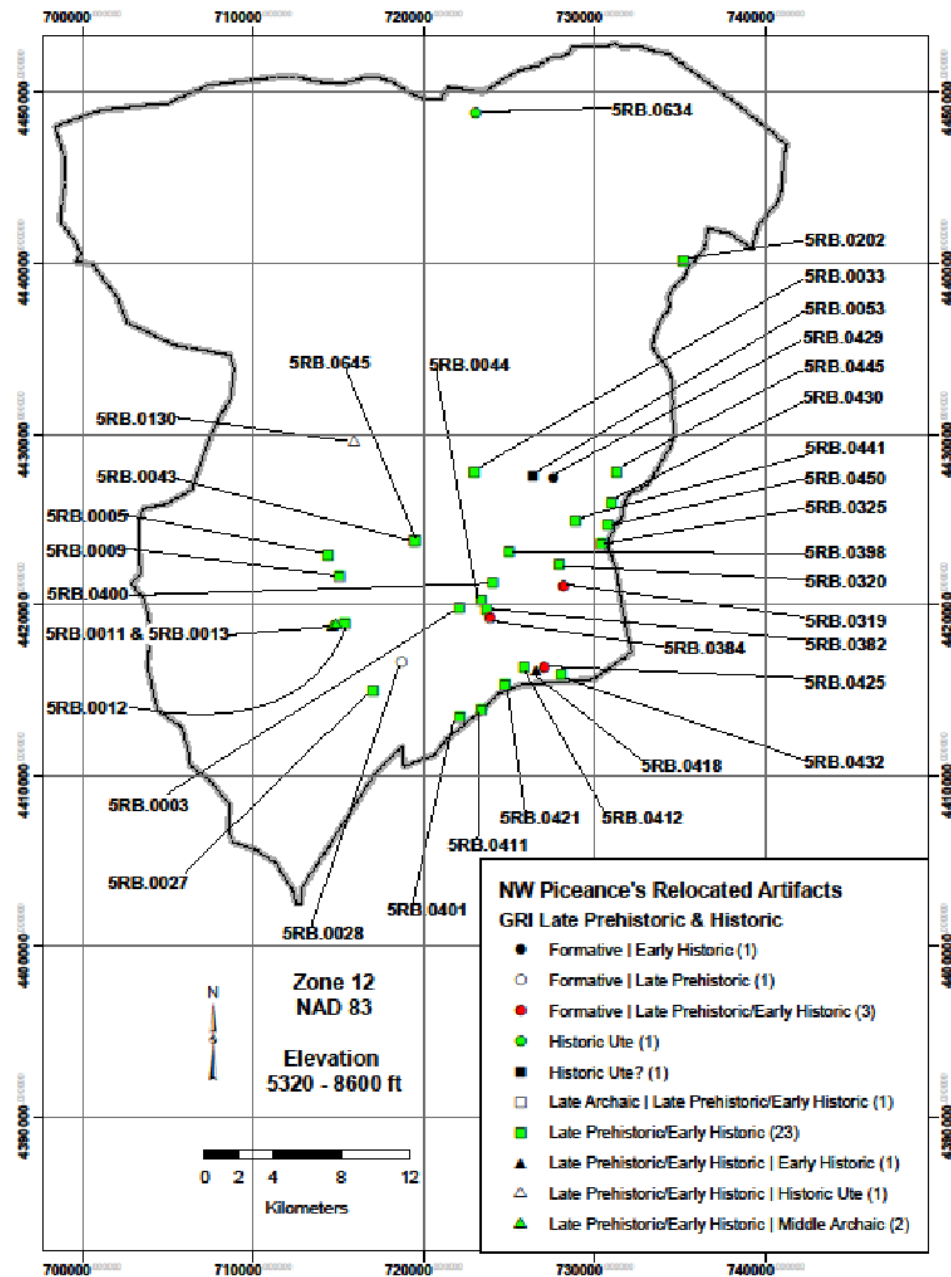
Wooden Feature ☐ Ceramics ☐











Historic

Beads

5RB.130.s4



Gun Flints

5RB.116.s1



5RB.634.s3



Spent Metal Shot

5RB.451.s15



Tinklers

5RB.451.s17



5RB.451.s18

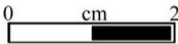


5RB.451.s10



Metal Point

5RB.509.fs22



Late
Prehistoric/
Early
Historic

Small Stemmed

5RB.382.s5



5RB.384.s1



5RB.430.s3



Side-notched

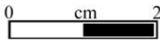
5RB.432.s1



5RB.432.s7



5RB.400.s2



Desert S-N

5RB.418.s7



5RB.418.s10



5RB.130.s6



5RB.9.s1



5RB.44.s1



5RB.202.s1



5RB.13.s18



5RB.13.s26



5RB.320.s3



Cottonwood

5RB.43.s12



5RB.44.s2



5RB.418.s8



5RB.441.s2



Late Prehistoric/Early Historic

Uncompahgre Brownware

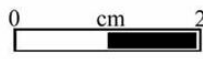
5RB.319.s1



5RB.319.s2



5RB.418.s2



Late Prehistoric/Early Historic

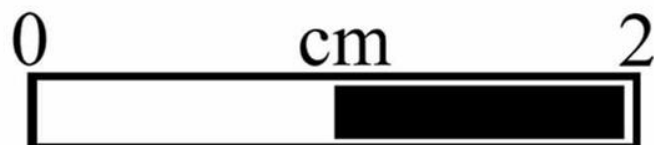
Micaceous Uncompahgre Brownware

5RB.411.s1

side A



side B



Inter Mountain Ware

5RB319.s17



rim fragment

Banded Greyware

5RB.435.s6

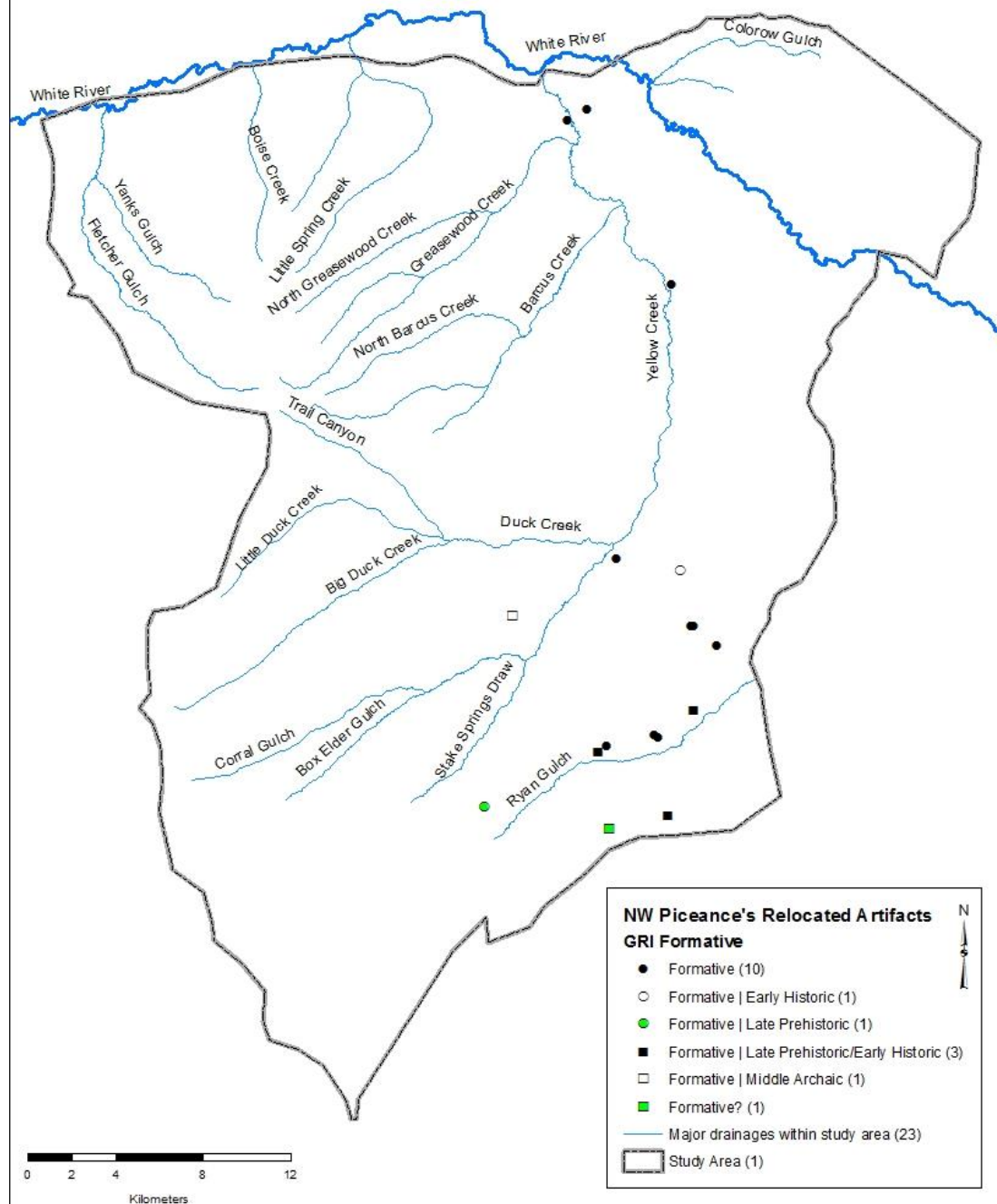


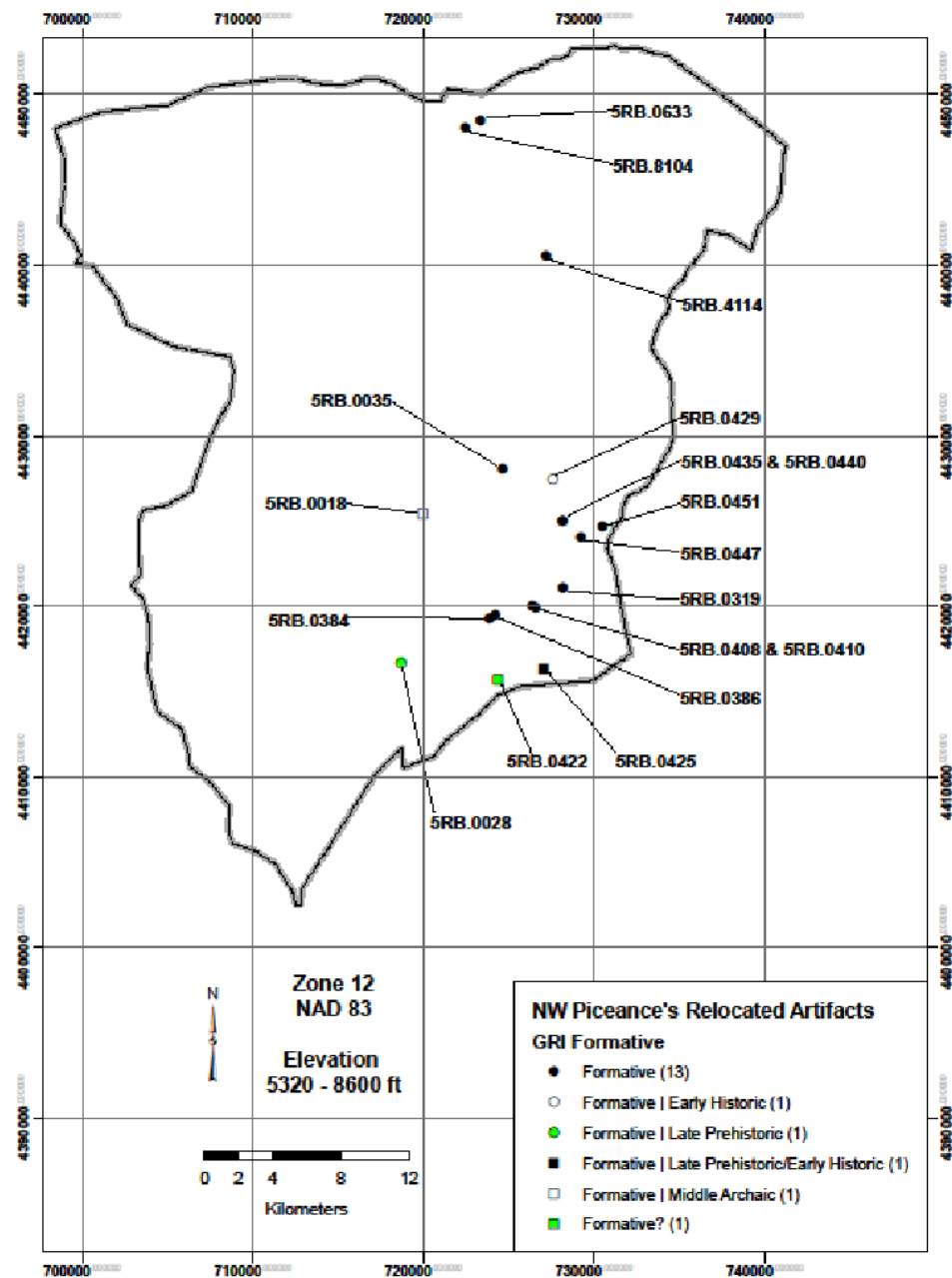
Formative



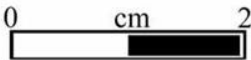
rim fragment







Anasazi Black on White
5RB451.s6



Formative

Avonlea Pottery

5RB.410.s5

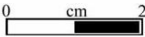
side A



side B



5RB429.s10



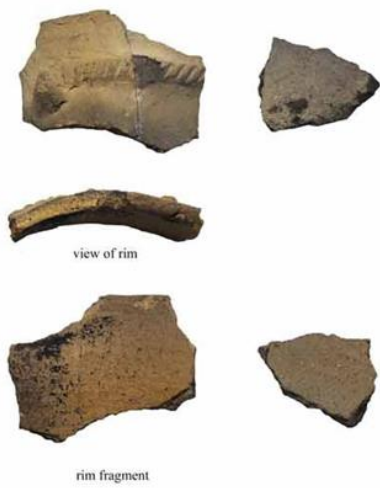
5RB425.s15



Formative-Fremont

5RB2624

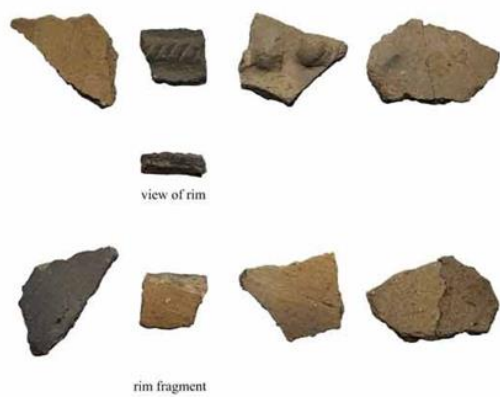
s1



s4



s6



s9



s10



s20



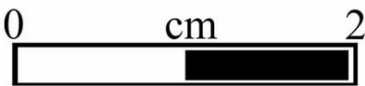
Formative

Rosegate

5RB.319.s5

5RB.322.s1

5RB.408.s1

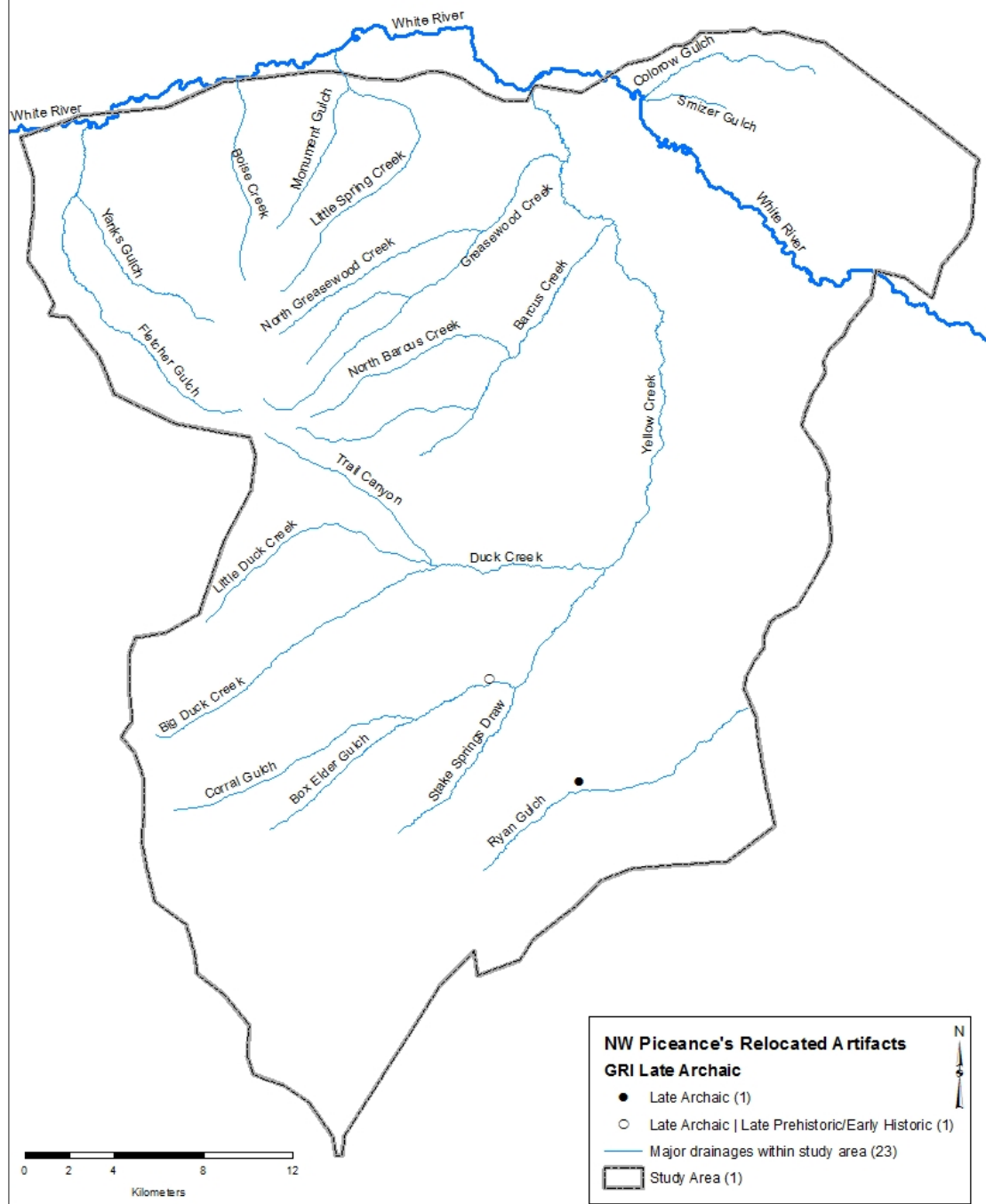


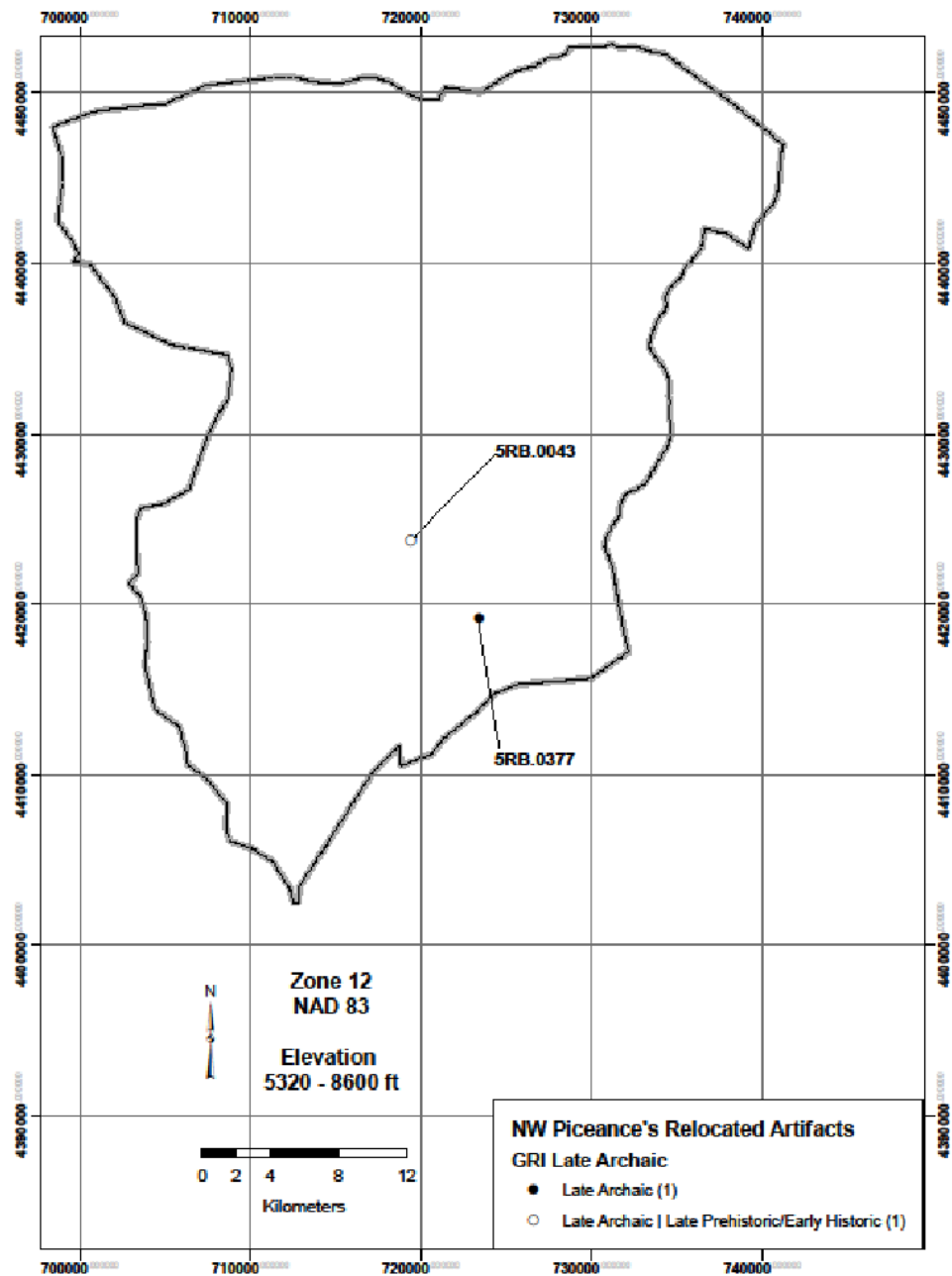
Avonlea

5RB.238.s1

5RB.633.s2







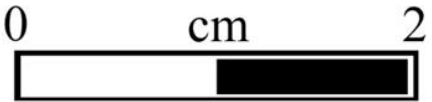
Corner-notched

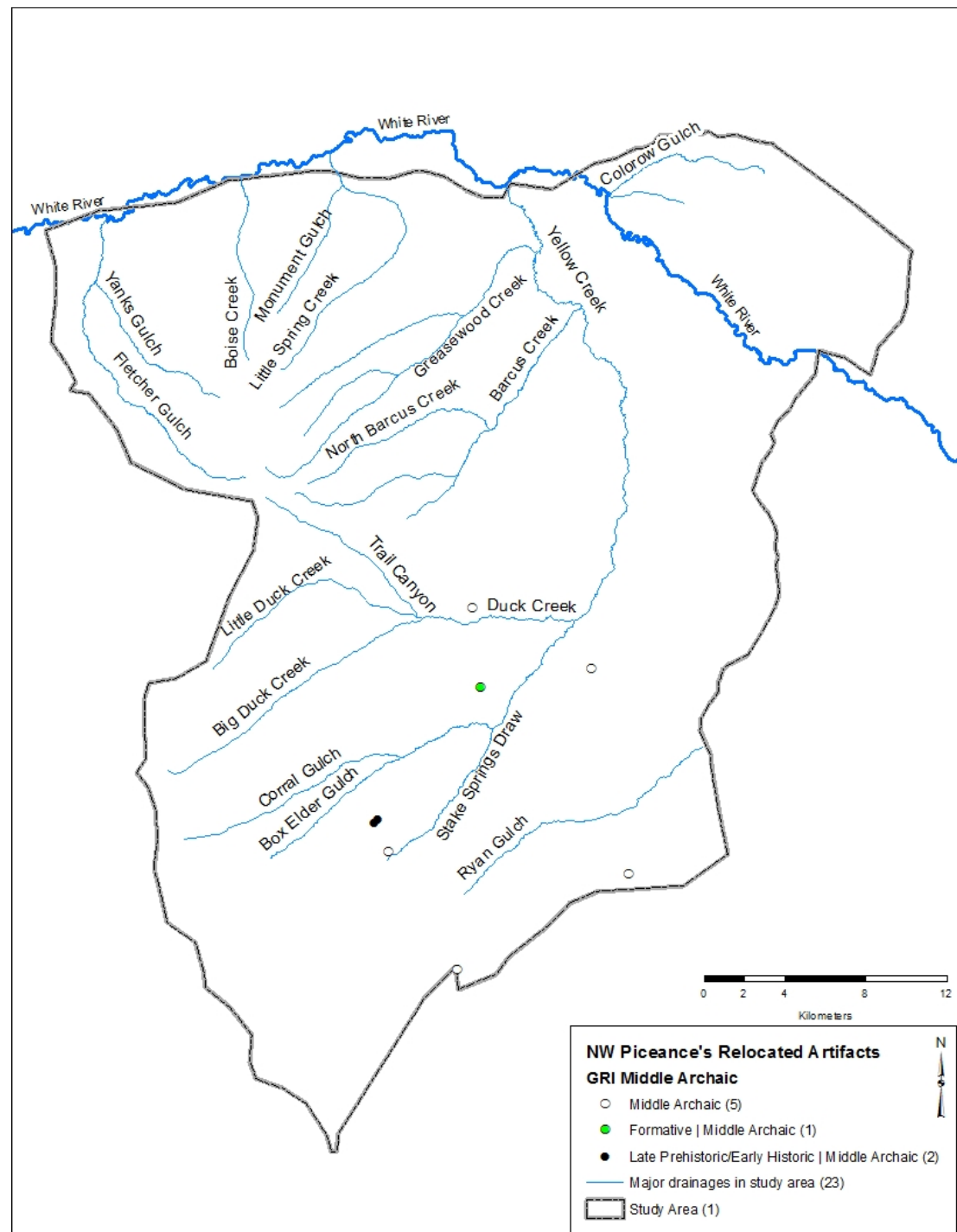
5RB.43

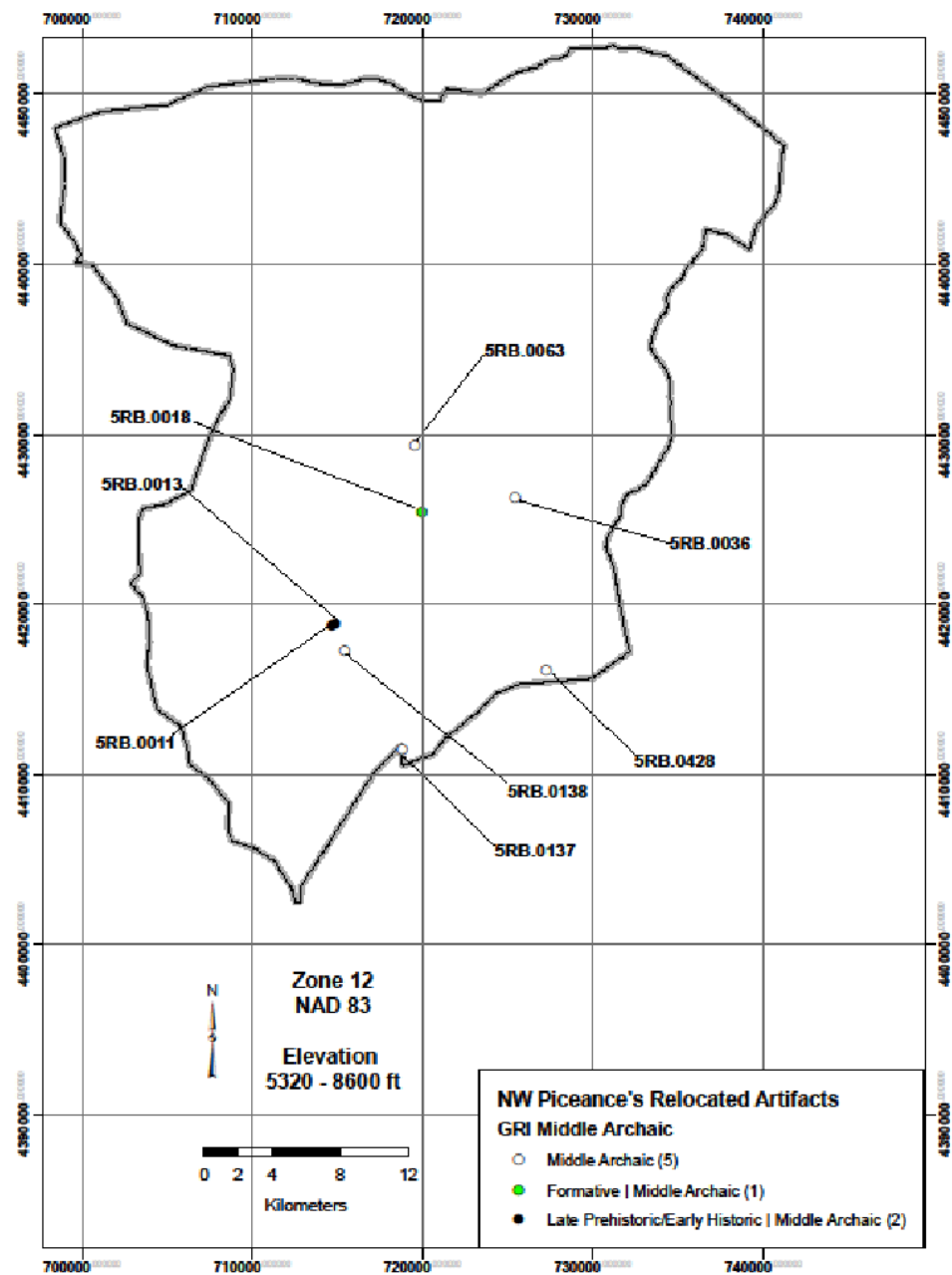
5RB.377.s3

s9

s11







Middle Archaic

Duncan

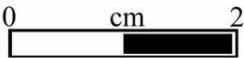
5RB.11.s6



5RB.18.s1(2008)



5RB.138.s1



Stemmed

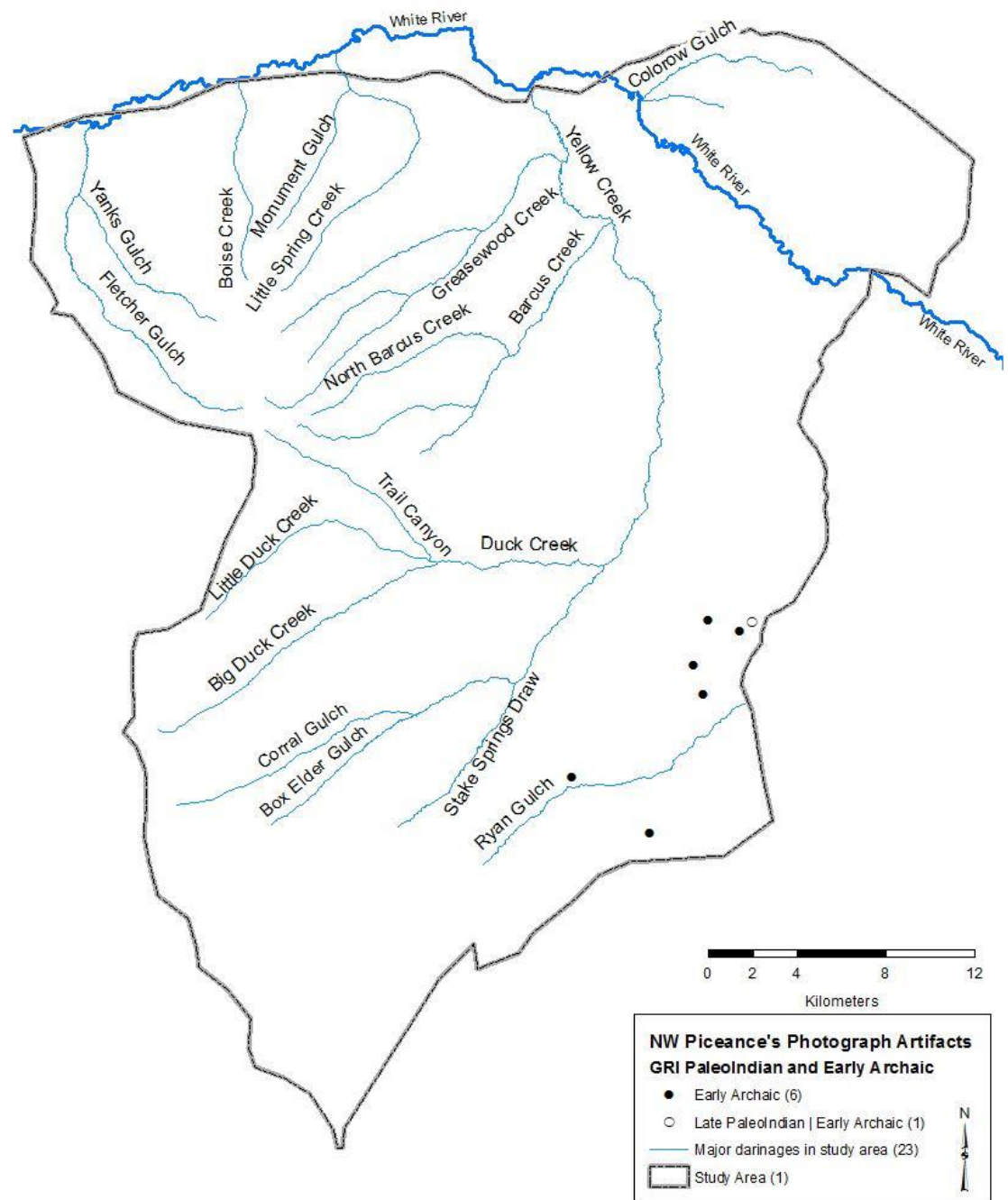
5RB.63.s1

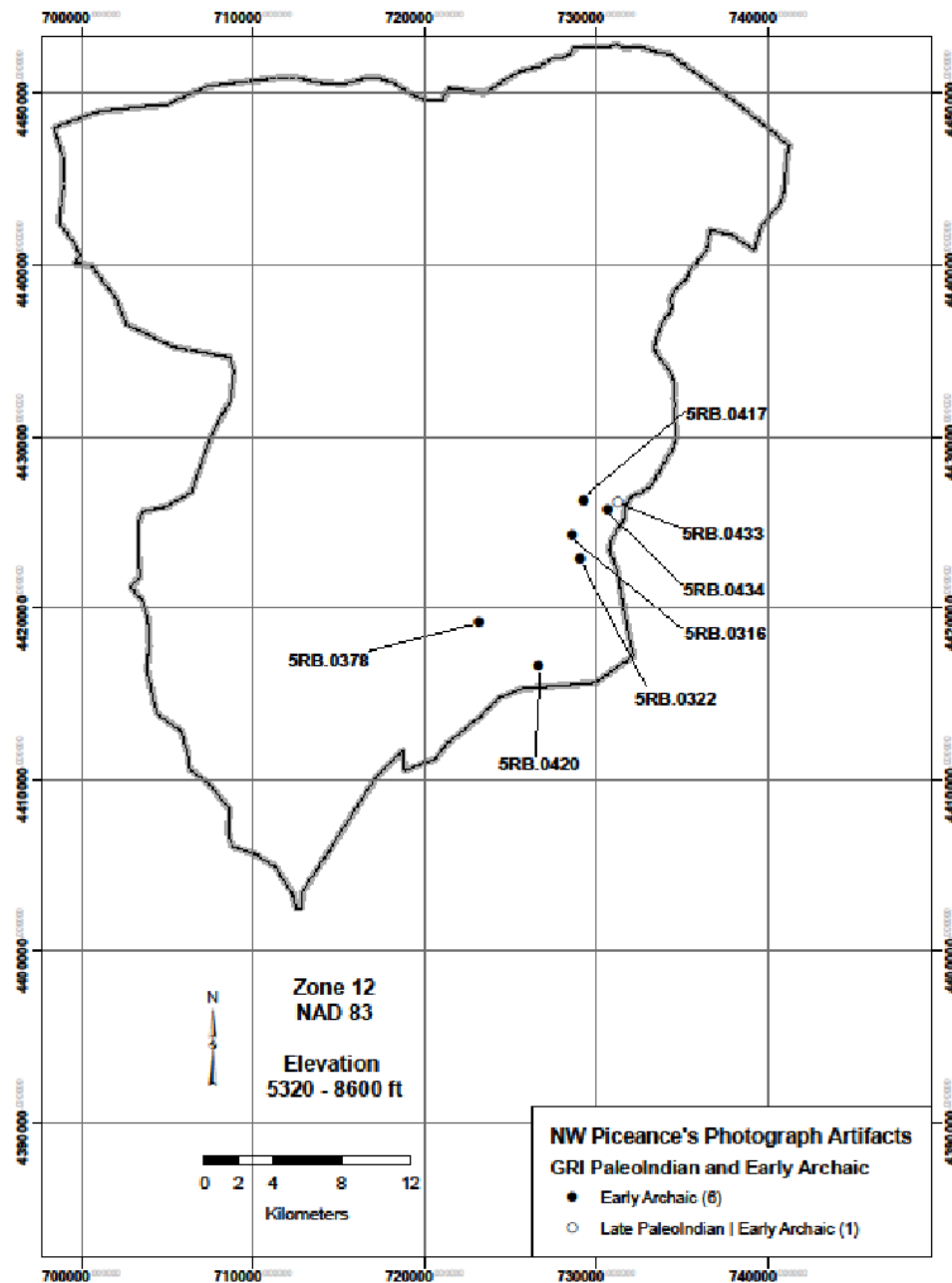


Sinbad S-N

5RB.13.s56







Early Archaic

Side Notched

5RB.316.s3



5RB.316.s4



5RB.417.s1



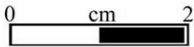
5RB.417.s5



5RB.433.s2



5RB.420.s1



Stemmed

5RB322.s3



Bifricated

5RB.378.s1



5RB.434.s1



Paleoindian

Foothill Mountain Lanceolate 5RB411.s2

